



VISUAL SIMULATIONS KEY

- 1 Sprain Brook Parkway Looking North 1
- 2 Sprain Brook Parkway Looking Northwest 2
- 3 Sprain Brook Parkway Looking South 1
- 4 Sprain Brook Parkway Looking South 2
- 5 Saw Mill River Parkway Looking Southeast
- 6 West Stevens Avenue Looking Southeast
- 7 Hospital Road Looking Northeast
- 8 Bradhurst Park Looking West
- 9 Philip Place Looking South
- 10 Dorothy Court Looking South
- 11 Westchester Hospital Looking North
- 12 Skyline Drive Looking East 1
- 13 Skyline Drive Looking East 2
- 14 Skyline Drive Looking Southeast 3
- 15 Bradhurst / Hospital Road Looking West
- 16 Hospital Road / Sprain Brook Overpass Looking West
- 17 Gate of Heaven Cemetery Looking West



December 18, 2019 | ©2019 Torti Gallas + Partners | 1300 Spring Street, 4th Floor | Silver Spring, Maryland 20910 | 301.588.4800



FARERI ASSOCIATES

Visual Simulation 1: Sprain Brook Parkway Looking North
WESTCHESTER BIO-SCIENCE & TECHNOLOGY CENTER

NEW TREE BUFFER
Principally with Evergreen Trees

EXISTING TREES ALONG PARKWAY
Principally with Deciduous Trees



HOSPITAL BUILDING BEYOND
Westchester Medical Center Building

EXISTING TREES ALONG PARKWAY
Principally with Deciduous Trees

NEW TREE BUFFER BEHIND
Principally with Evergreen Trees

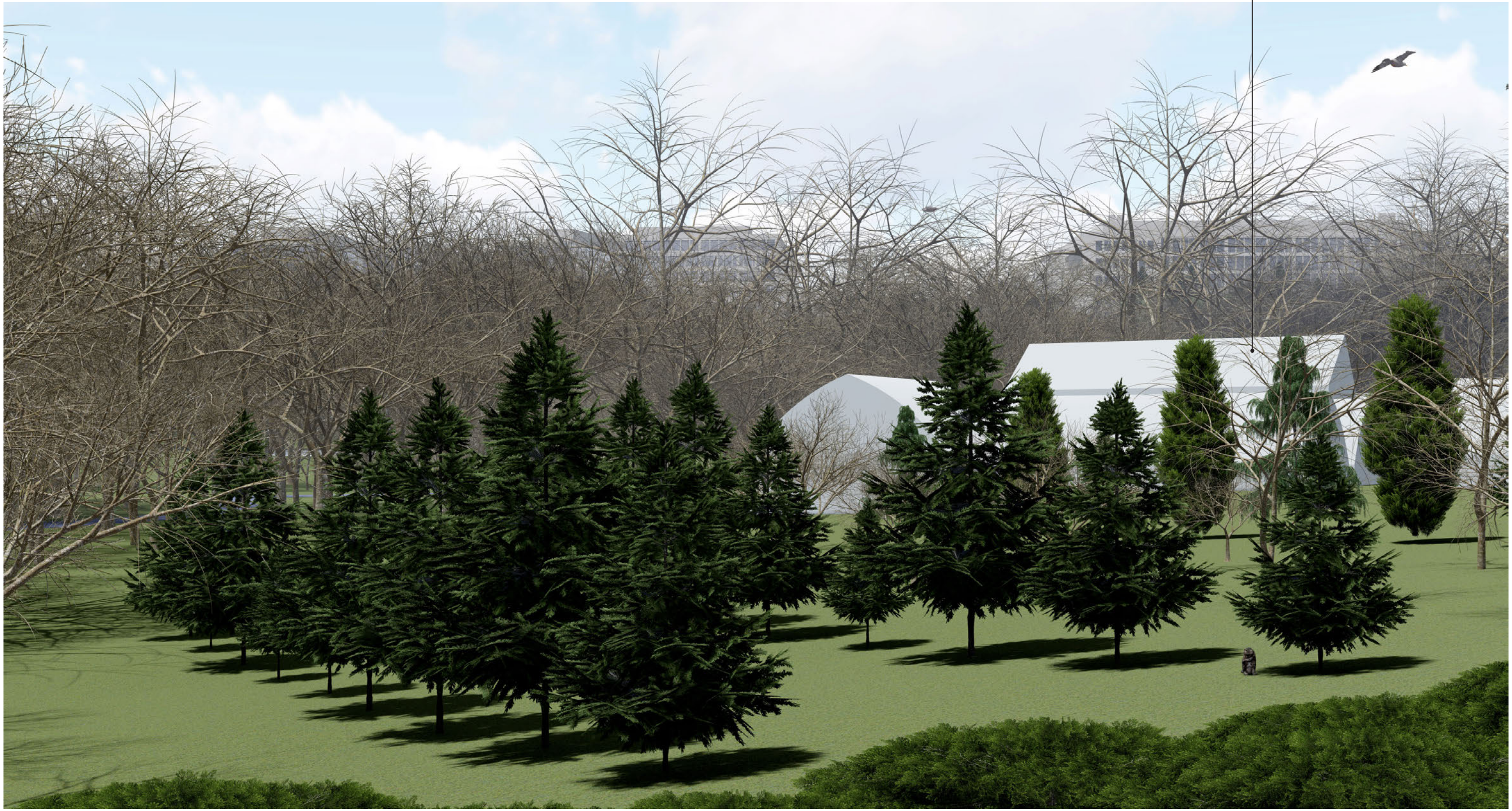


HOSPITAL BUILDING BEYOND
Westchester Medical Center Building

NEW TREE BUFFER
Principally with Evergreen Trees



NURSERY BUILDINGS
Between Saw Mill River Road and Parkway



December 18, 2019 | ©2019 Torti Gallas + Partners | 1300 Spring Street, 4th Floor | Silver Spring, Maryland 20910 | 301.588.4800



FARERI ASSOCIATES

Visual Simulation 5: Saw Mill River Parkway Looking Southeast
WESTCHESTER BIO-SCIENCE & TECHNOLOGY CENTER

EXISTING HOMES



December 18, 2019 | ©2019 Torti Gallas + Partners | 1300 Spring Street, 4th Floor | Silver Spring, Maryland 20910 | 301.588.4800



FARERI ASSOCIATES

Visual Simulation 6: West Stevens Avenue Looking Southeast
WESTCHESTER BIO-SCIENCE & TECHNOLOGY CENTER

HOSPITAL PARKING
Existing Lot



TREES ALONG EASTSIDE OF SPRAIN BROOK PARKWAY

PLAY FIELD

PARK PARKING LOT



W STEVENS AVE BEYOND

EXISTING HOME



DORTHY COURT

W STEVENS AVE BEYOND

LANDSCAPE BUFFER
Stone Wall and Evergreen Trees Added



EXISTING HOSPITAL BUILDINGS



December 18, 2019 | ©2019 Torti Gallas + Partners | 1300 Spring Street, 4th Floor | Silver Spring, Maryland 20910 | 301.588.4800



FARERI ASSOCIATES

Visual Simulation 11: Westchester Hospital Looking North
WESTCHESTER BIO-SCIENCE & TECHNOLOGY CENTER

EXISTING TREES
Between Buildings 7 & 9 on Skyline Dr





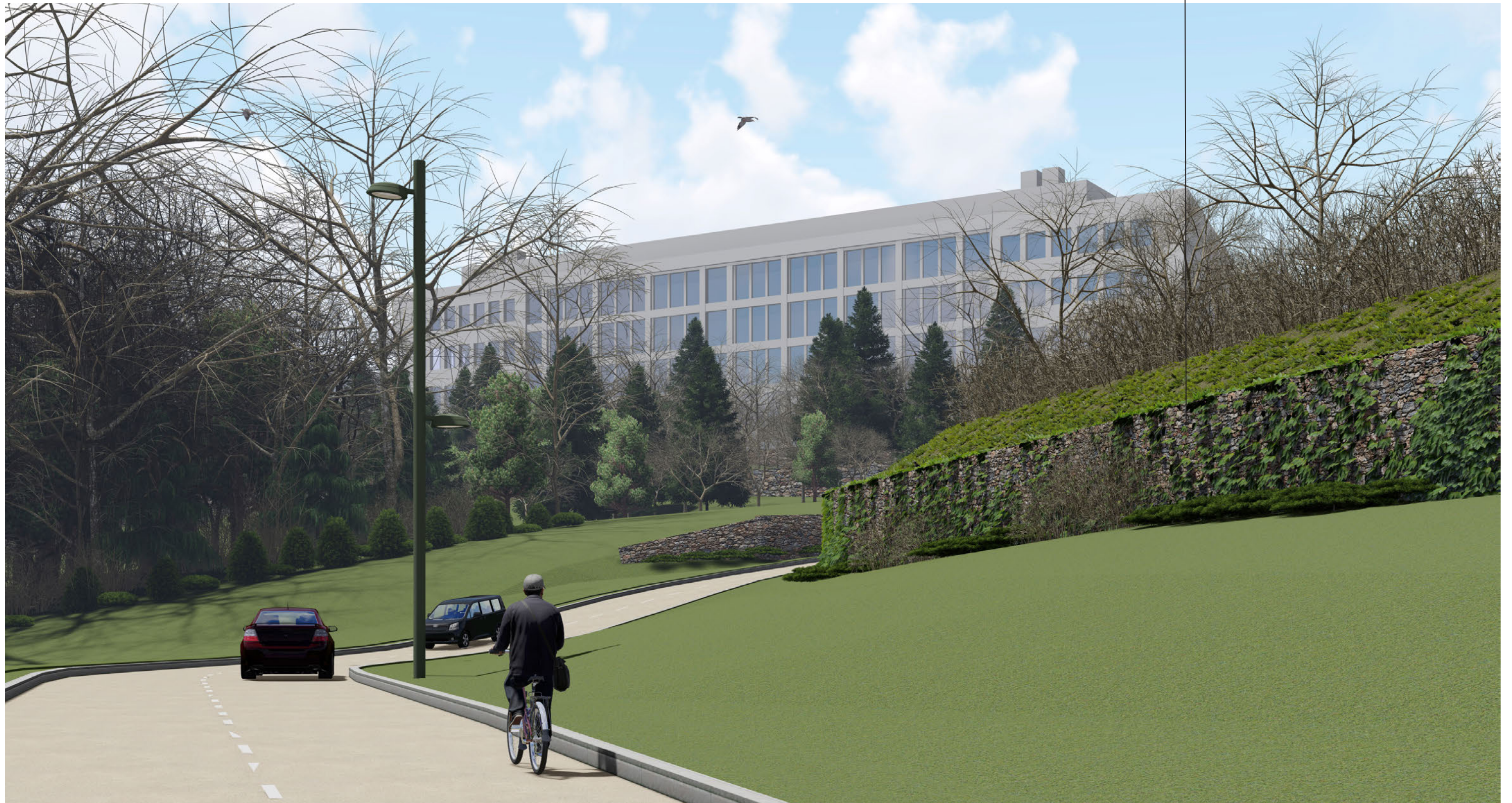
December 18, 2019 | ©2019 Torti Gallas + Partners | 1300 Spring Street, 4th Floor | Silver Spring, Maryland 20910 | 301.588.4800



FARERI ASSOCIATES

Visual Simulation 13: Skyline Drive Looking East 2
WESTCHESTER BIO-SCIENCE & TECHNOLOGY CENTER

EXISTING RETAINING WALL
Behind Building 2 on Skyline Dr







December 18, 2019 ©2019 Torti Gallas + Partners | 1300 Spring Street, 4th Floor | Silver Spring, Maryland 20910 | 301.588.4800



FARERI ASSOCIATES

Visual Simulation 16: Hospital Road / Sprain Brook Overpass Looking West
WESTCHESTER BIO-SCIENCE & TECHNOLOGY CENTER

BRADHURST AVE BEYOND

CEMETERY WALL
Runs along Eastside of Bradhurst Ave

